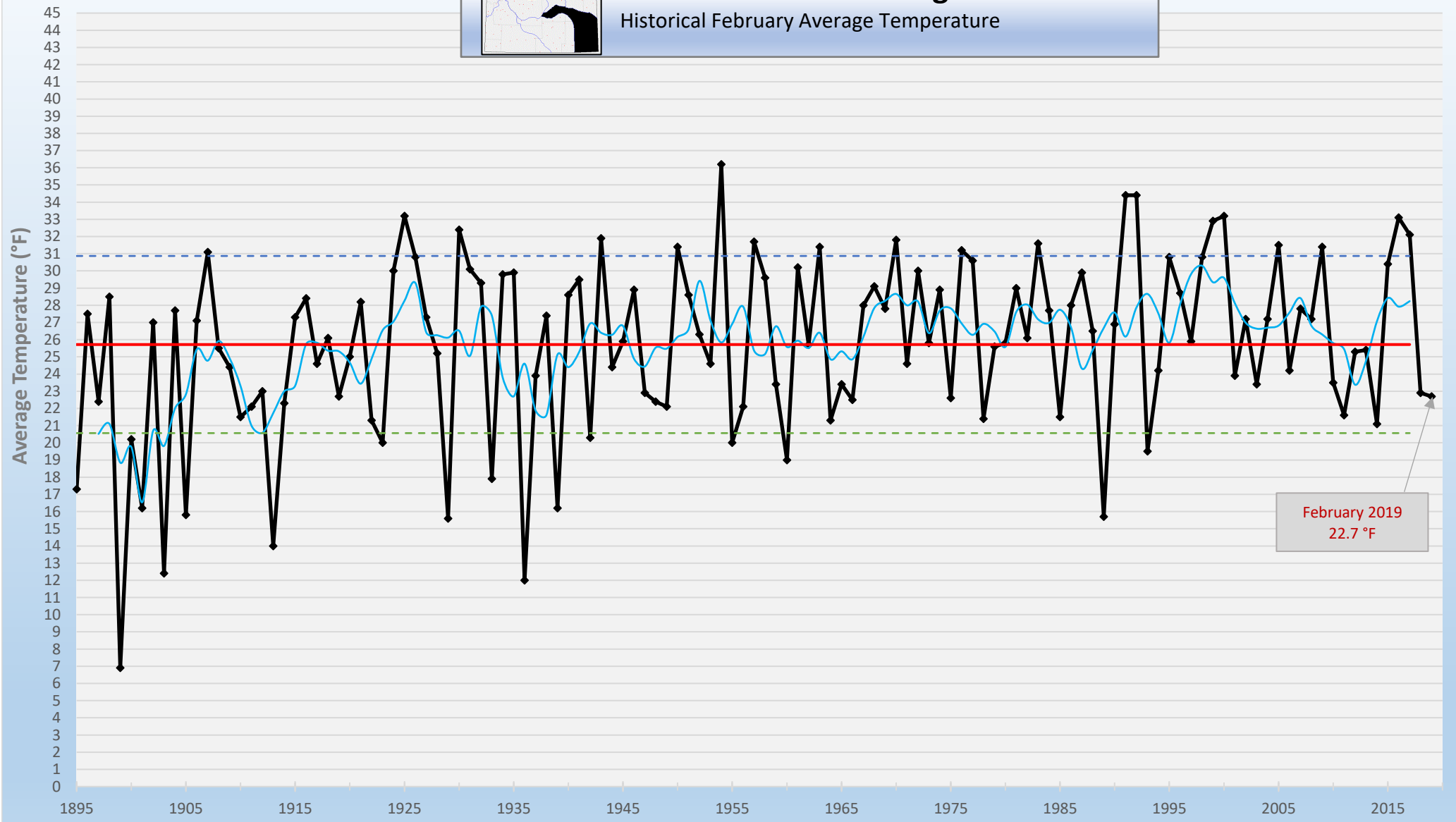


Lower Platte Drainage

Historical February Average Temperature



February 2019
22.7 °F

—◆— February Average Temperature — 5-Year Running Mean
— 1895-2019 Average Temperature - - - (+) Sigma
- - - (-) Sigma

Year

Product of the Water Resources Data System & State Climate Office
<http://www.wrds.uwyo.edu>
Data Courtesy: National Center for Environmental Information (NCEI)
<https://www.ncei.noaa.gov/>